

[Print a condensed pdf copy](#) of this newsletter, two web pages per sheet of paper.



[Website](#) [What's New](#) [Catalog](#) [DocStore](#) [Facebook](#) [Officials](#) [Member Portal](#) [Contact Us](#)



For the popular National Park Service Potpourri Lecture Series: Ranger Heidi Dietze discusses the flu epidemic of 1918

February 6, 2015

Editor of the Week: Gordon Canyock

Table of Contents

- [Alerts & Notices](#)
- [New Registration System](#)
- [Program Planning Group Meetings](#)
- [Black Holes, Flash Gordon's Ray Gun, Your iPad, and ObamaCare](#)
- [Obituary](#)
- [Ask Uncle Olli](#)
- [February Book Club Meeting](#)
- [Poet's Corner](#)
- [Arts & Music at George Mason](#)
- [Mason Highlights](#)
- [Meetings & Clubs](#)
- [About OLLI E-News](#)

Alerts & Notices

Registration for the Valentine's Party on Feb 20th closes on Feb 13th. Register in any OLLI office

[Back to Top of Page](#)

New Registration System



By Jennifer Disano, Executive Director

The launch of the New OLLI Registration System is planned for February 18th and many hands are working overtime to prepare for this very important date! We're all excited, but before we can "go live" we're asking OLLI Members to help with some housekeeping. In order to protect your privacy, passwords were not imported into the new system. Also, some profile information has changed and needs to be updated. Item #1 absolutely must happen. Item #2 is up to you but we'd really like it if you would also do this one. Watch this [video](#) to see how to do the updates

1. **MUST DO:** Next Monday, February 9th go onto the OLLI website www.olligmu.edu and click on the Member Portal. This will take you directly to the new registration site. Go to the SIGN IN page, enter your user name and email address (same as old system) and click Forgot Password. This will generate an email to your inbox. Go to your inbox and click the link that takes you back to the reset password page. Please find specific instructions on how to reset your password here: <http://olligmu.edu/wp-content/uploads/2015/02/HowtoResetYourPasswordontheOLLIRegistrationSystem.pdf>
2. **OPTIONAL:** Once you have reset your password please go to the 'My Profile' link on the left hand navigation bar. Here you will be taken to your profile page. Click the 'Edit' link at the bottom of the page. This will take you to the personal information page. Please update any information on this page and be sure to complete any fields with a red asterisk which denote a required field. Please find specific information on how to update your profile information here: <http://olligmu.edu/wp-content/uploads/2015/02/updateprofile.pdf>

[Back to Top of Page](#)



Program Planning Group Meetings



by Kathryn Russell, Program Committee Chair

Program Planning groups are currently meeting to choose courses for upcoming terms. If you'd like to offer ideas—or just listen and learn—come along and join in the fun. All OLLI members are invited to attend. You'll definitely enjoy the camaraderie, and you'll have the chance to see how your program is made. These planning groups are meeting soon:

Special Events – First Wednesday of each month, Tallwood

Loudoun Planning Group – Wednesday, February 11, 1:30 in the conference room at Mason Loudoun

Science, Technology and Health – Friday, February 13, 11:30, Tallwood (rescheduled because of inclement weather)

Language, Literature and Theater - Thursday, Feb. 19, 10:00 - Tallwood

[Back to Top of Page](#)



What Do Black Holes, Flash Gordon's Ray Gun, Your iPad, and ObamaCare Have In Common?

By John Acton, Co-Chair of the OLLI Science, Technology, and Health Program Planning Group

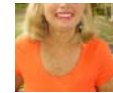
The answer will be revealed at the next meeting of the OLLI Science, Technology, and Health Program Planning Group, to be held on Friday, Feb 13th at the Tallwood Campus, from 11:30 to 1:30. OK — here's a hint: they're just a few of the hundreds of ideas submitted by OLLI members in response to recent surveys looking for topics of interest. Please join us as we ponder how to develop courses that will help inform and pique the interest of OLLI members. Oh, and don't forget to bring your lightsabers.

[Back to Top of Page](#)

Obituary - Arleen Richman



We are sad to report the passing of OLLI member Arleen Richman on Tuesday, February 3, 2015. She joined OLLI in 2005. She enjoyed courses on art, history and religion and served on the Communications Committee and as an *E-News* staff writer. Arleen's funeral service was conducted on Thursday, February 5. She will be laid to rest in her father's family plot in Queens, N.Y. Additional information is available at <http://tinyurl.com/o9hgg4w>



[Back to Top of Page](#)

Ask Uncle Olli



By Uncle Olli, Driver Safety Consultant

Uncle Olli has lived in Northern Virginia most of his lifetime, and has encountered every traffic problem. But sometimes the little problems seem so trivial you are embarrassed to admit them. Easy. Ask Uncle Olli at ollinewseditor@gmail.com. He is embarrassed by nothing!

I KNOW, I KNOW: WHEN YOU SKID, TURN IN THE DIRECTION OF THE SKID. I'M IN A PANIC: WHAT DIRECTION IS THAT?

The opposite of what your instinct tells you. You start to spin counterclockwise (your trunk swings toward the curb). You instinctively steer left, away from the direction you are heading. Wrong. So you turn the other way. Right. By that time you've hit something. Instead, turn IN THE SAME DIRECTION you are slipping. This will align your wheels and allow you to slow down and even steer. A little. That's why you should drive slowly in snow.

Why do you spin? Because it is as if you are spinning the car. When you turn against the spin, you twirl the car. When you turn in the direction of the spin you are making the whole car slide sideways, which it does not want to do. The only way to learn counterintuitive ways is to practice. Try this on a snowy Sunday in an empty parking lot. Have a non-relative in the car with you. One of you is going to yell. You can avoid a friend, but not a relative.

[Back to Top of Page](#)

February Book Club Meeting



By Ceda McGrew, Club Coordinator

The OLLI Book Club will meet on Wednesday, February 11 at 1:30 PM at Tallwood. The book for discussion is *Elsewhere*, Richard Russo's 2012 memoir about growing up in the close-knit upstate New York town of Gloversville. It is also the story of this once prosperous community's decline as the demand for handmade leather goods collapsed due to changes in fashion and competition from less expensive imports. In 2002 Russo won the Pulitzer prize for fiction for his book *Empire Falls*. In September 2014 he was a featured speaker at the local Fall for the Book Festival and was awarded the Fairfax Prize.

All OLLI members are welcome.

The book for discussion in March is *Nineteen Minutes* by Jodi Picoult

[Back to Top of Page](#)

Poet's Corner

Courtesy of the Poetry Workshop

Ode to the Hovering Bird

Hummingbird blasts by gracious gladiolus
towering pillars of billowy petals

nectar whispers its sweet invitation
come in, come in, my ravenous friend

caressing each precious bloom in turn
she deems them each delightful

enlivened by her embrace
petals shiver in the breeze

of the relentless

beat
of
her
wings

no hesitation now, no doubts

just hunger and gratification
gladness and delight.

By Susan Bennett

[Back to Top of Page](#)

Arts & Music at George Mason



Performances, next ten days

By Shelly Gersten, OLLI E-News Staff Writer

For tickets for either CFA or Hylton, call 1-888-945-2468, buy tickets online through the event calendar (see links below), or visit the venue's box office. For more information see the CFA [ticket page](#) or the Hylton [ticket purchase page](#).

At the Fairfax Campus Venues

Walnut Street Theatre: *A Life in the Theatre*

Fri, Feb 6, 8:00

A play by David Mamet

Pre-Performance Discussion: Member of the Company.

Concert Hall

Admission: \$44, \$37, \$26.

A Sense of Wonder

Fri, Feb 6, 8:00

Based on the life and works of Rachel Carson

Written and performed by Kaiulani Lee

Harris Theatre

Admission: Adults, \$25; seniors, \$15.

Fairfax Symphony Orchestra

Sat, Feb 7, 8:00

Dvorák: Symphony No. 8

Bodórová: Symphony No. 1 (U.S. Premiere)

Concert Hall

Admission: \$50, \$40, \$25.

Todd Ellison and Friends: *The Romance of Broadway*

Sun, Feb 8, 4:00

Pre-Performance Discussion: Todd Ellison.

Concert Hall

Admission: \$46, \$39, \$28.

The Vagina Monologues

Fri, Feb 13 and Sat, Feb 14, 8:00 pm
Harris Theatre
Admission: \$25

Virginia Opera: Salome

Sat, Feb 14, 8:00
Pre-Performance Discussion: Glenn Winters.
Concert Hall
Admission: \$86, \$72, \$44.

[Back to Top of Page](#)

Mason Student & Faculty Performances

(see music.gmu.edu for additional student recitals)

Anna Balakerskaia and Friends

Sun, February 8, 7:00pm
Schubert: Fantasia
George Schumann: Trio
Schubert: "Trout" Quintet
Harris Theatre
Admission: Free.

Faculty Artist Series: Voice

Sun, Feb 15, 4:00
Harris Theatre
Admission: Free.

[Back to Top of Page](#)

At the Hylton Center

PWCS Exhibit: Making Connections Through Art

Feb 2 - Mar 8
Buchanan Partners Art Gallery is open to the public Tue-Sat, 10:00 - 6:00, Thur., 10:00 - 8:00 and two hours before performances. Gallery Reception: Sat, Feb 28 from 12:30 to 1:45. For more information about the current exhibit, visit HyltonCenter.org/gallery. For reception RSVP to Hylton@gmu.edu.

Admission: Free.

Arlo Guthrie: Alice's Restaurant 50th Anniversary Tour

Fri, Febr 6, 8:00
Pre-Performance Discussion: Dr. Greg Robinson, Assistant Professor of Music.
Merchant Hall
Admission: \$50, \$43, \$30.

Creative and Performing Arts Center (CPAC): Locomotion

Sat, Feb 7 and Sun Feb 8, 3:00 pm
Sun, Feb 7, 7:00
Gregory Family Theater
Tickets: Adults, \$15 (\$17 at the door); children, \$10 (\$12 at the door).

American Festival Pops Orchestra: Valentine's Day Pops

Sat, Feb 14, 8:00
Pre-Performance Discussion: Bryan Kidd, Arranger in Residence.
Merchant Hall
Admission: \$48, \$41, \$29.

[Back to Top of Page](#)

For further details on any of the above events, please see the CFA [event calendar](#) and the Hylton Center [event calendar](#)

[Back to Top of Page](#)

Mason Highlights



Other Mason events, next two weeks

By Helen Ackerman, OLLI E-News Staff Writer

Lecture: Dr. Wade Henning will discuss "Extreme Exoplanets" showing how 'out of this world' planets move around stars other than our sun. Mon, Feb 9, 5:30 to 7:30. Research Hall, Showcase and Observatory. In the event of inclement weather, the event will be postponed. Announcements about cancellations are posted to the website (<https://cos.gmu.edu/observatory/visiting-the-observatory/>) the day of the event. Wear closed toed shoes, and dress appropriately for being outside for the duration of the observatory tour, which includes a look through the 32" telescope. Free.

Art Exhibit: George Mason University presents "Characters, Language and Design," an exhibit that explores the interconnectivity between language, culture, art and design in Chinese written characters. This is the first in a series of exhibits sponsored in partnership between Mason's School of Art, the Confucius Institute, and the College of Art of Beijing Language University. The exhibition runs from Thursday, February 4 - Sunday, March 8, 2015, at Founders Hall Gallery, 3351 Fairfax Drive, Arlington, VA 22201.

[Back to Top of Page](#)

Meetings & Clubs

The following list covering the next two weeks is extracted for your convenience from the master online calendar maintained by the office, with direct web links added when available. The list is accurate as of mid-week but to check anytime for the latest information, please view the latest forecast of upcoming events on our website (News/[OLLI Calendar](#)). *Note: All OLLI members are welcome at, and encouraged to attend, meetings of the Board of Directors, committees and resource groups, Kickoff Coffees, etc. (**bolded** below).*

Sat Feb 7	10:30am	Tai Chi Club-TA-3
Tue Feb 10	10:00am	Knitting and Needlework Club-Panera, Herndon
Wed Feb 11	1:30pm	Book Club-TA-2
	1:45pm	Bridge Club-TA-3
	1:45pm	Bridge Club Loudoun
Fri Feb 13	9:00am	Recorder Consort-TA-3
	9:30pm	Photography Club-TA-1
	10:00am	Craft and Conversation-Cottage
	11:00am	Classic Literature Club-TA-2
	11:00am	Homer etc-Annex
	11:30am	Science, Technology and Health Program Group-TA-1
Sat Feb 14	10:30am	Tai Chi Club-TA-3
Tue Feb 17	10:00am	Knitting and Needlework Club-Panera, Herndon
Wed Feb 18	10:00am	Bridge Club-TA-3
	10:00am	Mah Jongg Club-TA-2
	10:30am	Tom Crooker Investment Forum
	12:45pm	A/V Committee-TA-1
Thu Feb 19	10:00am	Literature, Language, Theater Program Planning Group-TA-2
Fri Feb 21		

9:00am	Recorder Consort-TA-3
10:00am	Craft and Conversation-Cottage
10:00am	Board of Directors Meeting-TA-1
11:00am	Homer etc-Annex

[Back to Top of Page](#)